

Mod. CG – PE

Mod. CG - PR

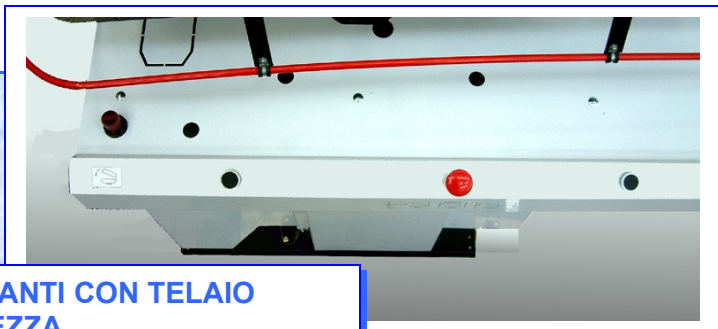
PRESSE PNEUMATICHE
PRESS PNEUMATIC
PRESSE PNEUMATIQUE



®

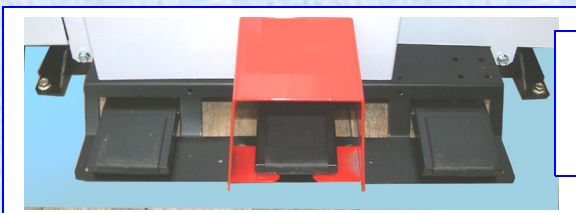
COCCHI



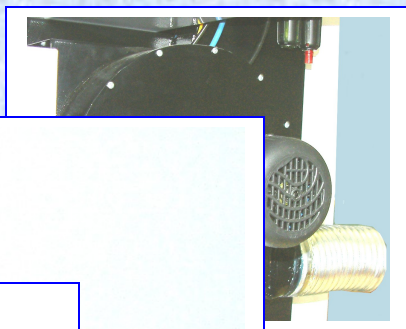


**CHIUSURA A 2 PULSANTI CON TELAIO
SICUREZZA
FERMETURE AVEC 2 BOUTONS ET CHASSIS
SECURITE**

OPTIONALS



**CHIUSURA A PEDALE
FERMETURE PAR PEDALE
CLOSING BY PEDAL-SWITCH**



Mod.CV-1

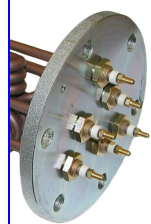
INOX

**HP
0.75**

LT. 24

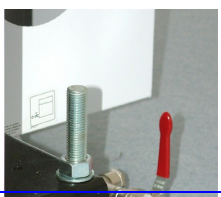
**Resistenze
Resistances
Elements 12.15.18**

**DE
DES
S**

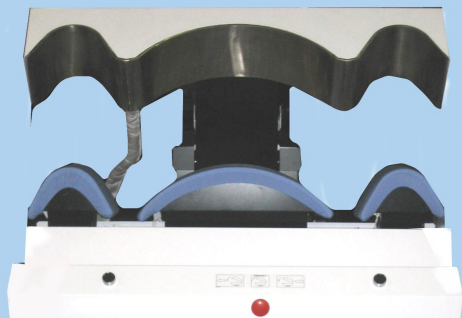


Mod. CG-PM

**PRESSA MANUALE
MANUAL PRESS
PRESSE MANUELLE**



**REGOLAZIONE ALTEZZA PRESSA
REGULATION HAUTEUR PRESSE
HEIGH-PRESS ADJUSTEMENT**



**REGOLAZIONE PRESSIONE
CHIUSURA
REGULATION PRESION FERMETURE
ADJUSTEMENT CLOSING PRESSION**



Mod. CG-P C

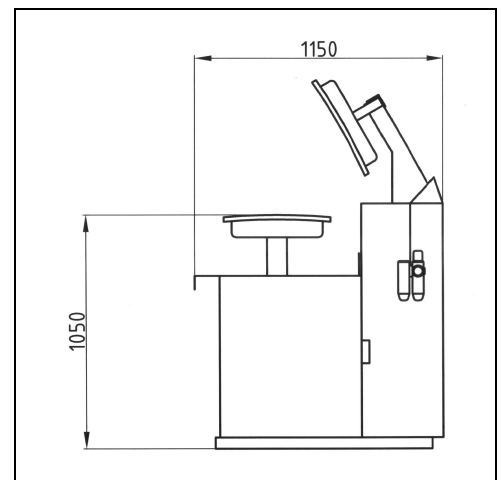
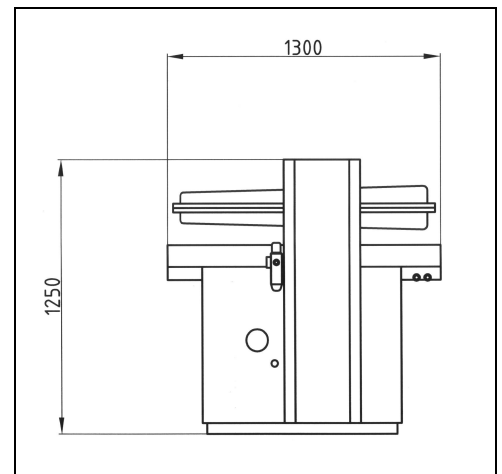
PRESSA COLLO & POLSI
PRESSE COL & POIGNETS
COLLAR & CUFFS PRESS

OPTIONALS CG-PE / CG-PR /CG-PM

CALDAIA AUTOMATICA INCORPORATA 24 LTS – 12.15.18 KW
MOTORE ASPIRAZIONE HP 0,75
MOTORE ASPIRAZIONE -SOFFIATURA HP 0,75
GRUPPO FERRO STIRO + FERRO 1000 W
CHIUSURA A 1 PEDALE
AUTOMAZIONE CON PROGRAMMATORE
PISTOLA VAPORE
PISTOLA ARIA-VAPORE
PLATO' SUPERIORE LUCIDO

CHAUDIERE AUTOMATIQUE INC. 24 LTS - 12.15.18 KW
MOTEUR ASPIRATION HP 0,75
MOTEUR ASPIRATION-SOUFFLERIE HP 1
GROUPE FER A REPASSER + FER 1000 W
FERMETURE AVEC 1 PEDALE
AUTOMATION AVEC PROGRAMMATEUR
PISTOLET VAPEUR - PISTOLET AIRE-VAPEUR
PLATEAU SUPERIEUR POLI

AUTOMATIC BOILER INC. 24 Lts – 12.15.18 KW
VACUUM MOTOR HP 0,75
VACUUM-BLOWING MOTOR HP 1
IRON GROUP + IRON 1000 w
CLOSING UPPER BOARD BY PEDAL
ELECTRONIC PROGRAMMATOR
STEAM GUN - AIR.STEAM GUN
UPPER BOARD POLISHED



COCCHI srl

via Pacinotti 19/a - 40017 San Giovanni in Persiceto - Bologna - Italy
tel. ++39 051 821787- fax ++39 051 826935

